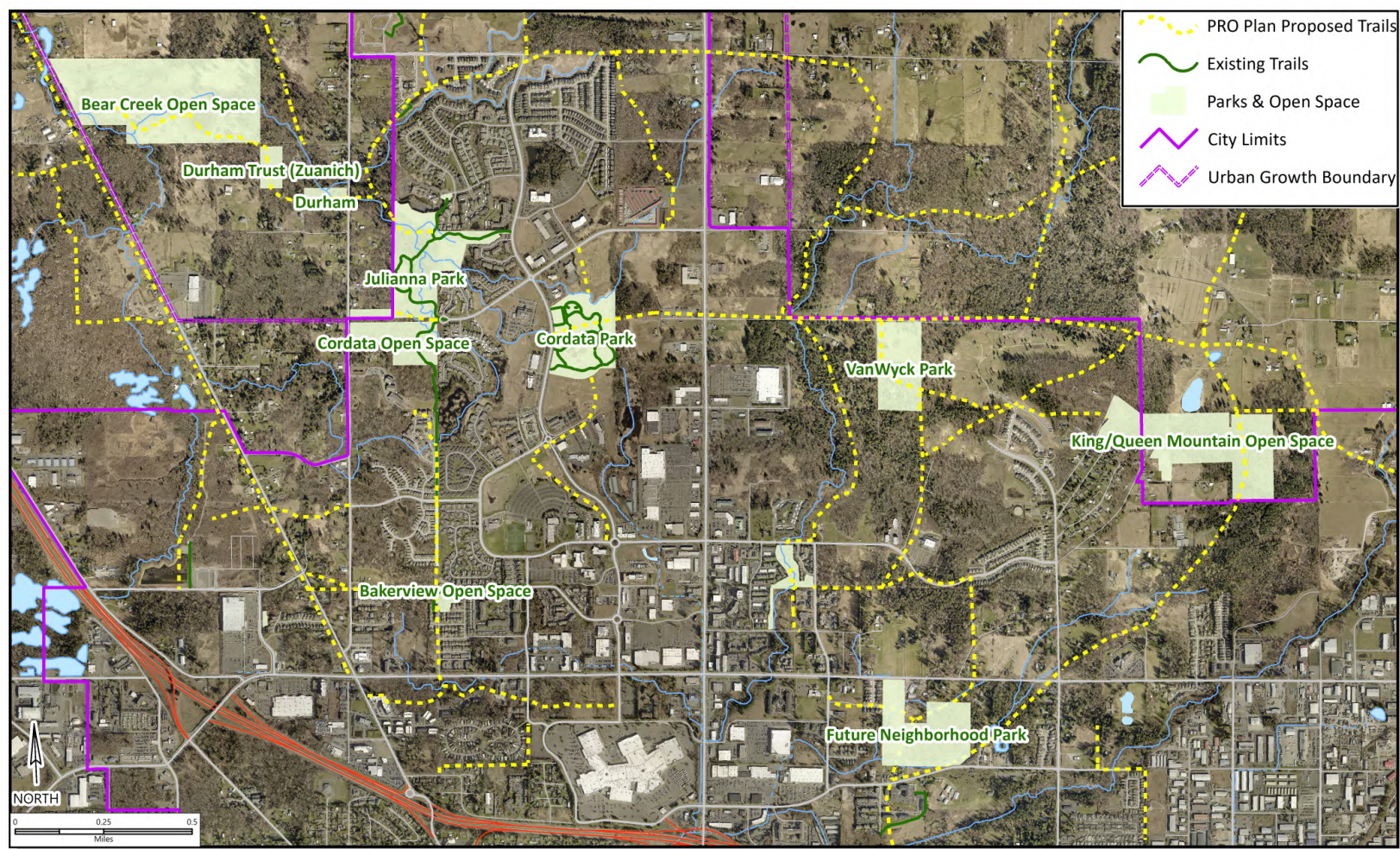
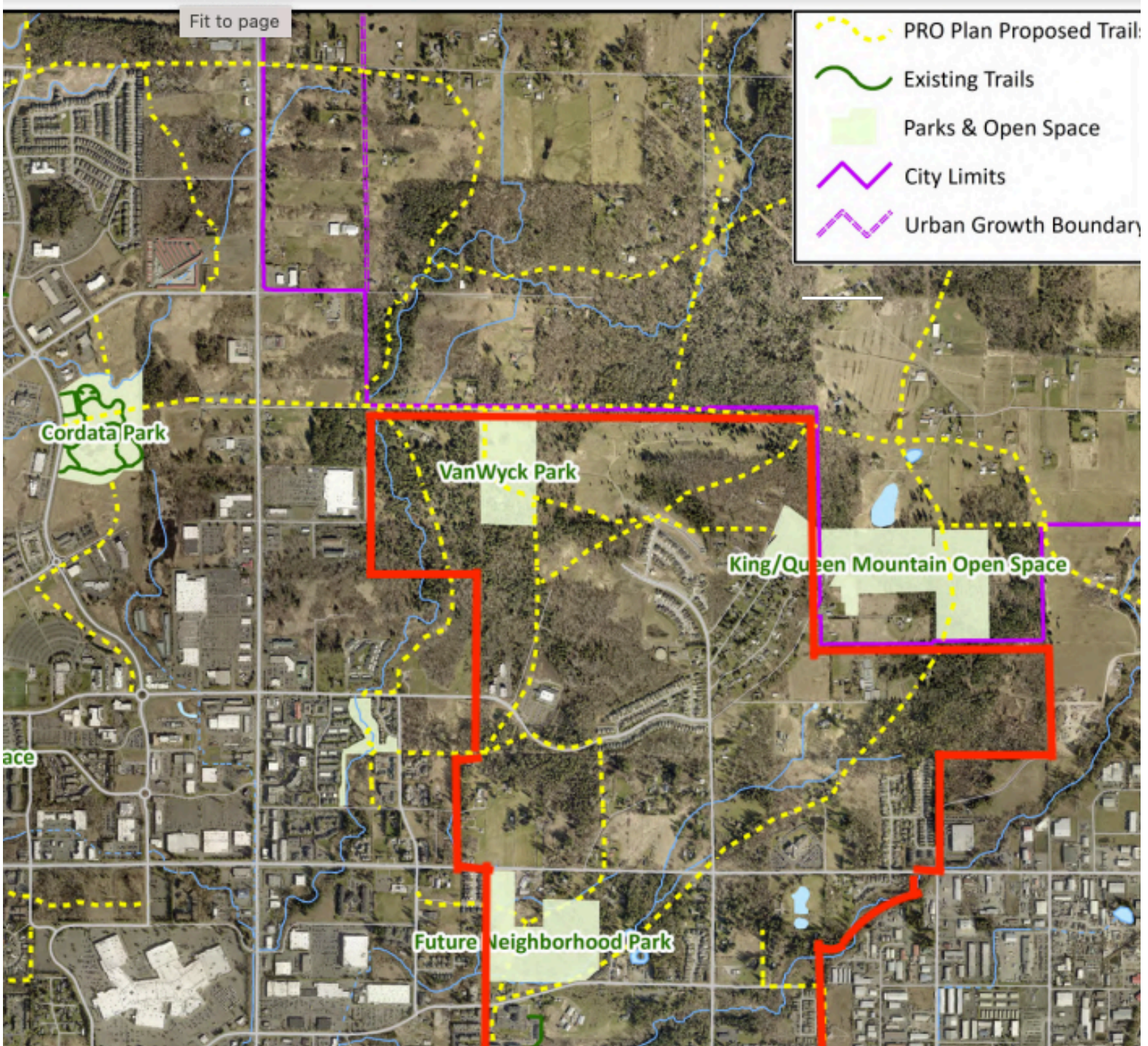


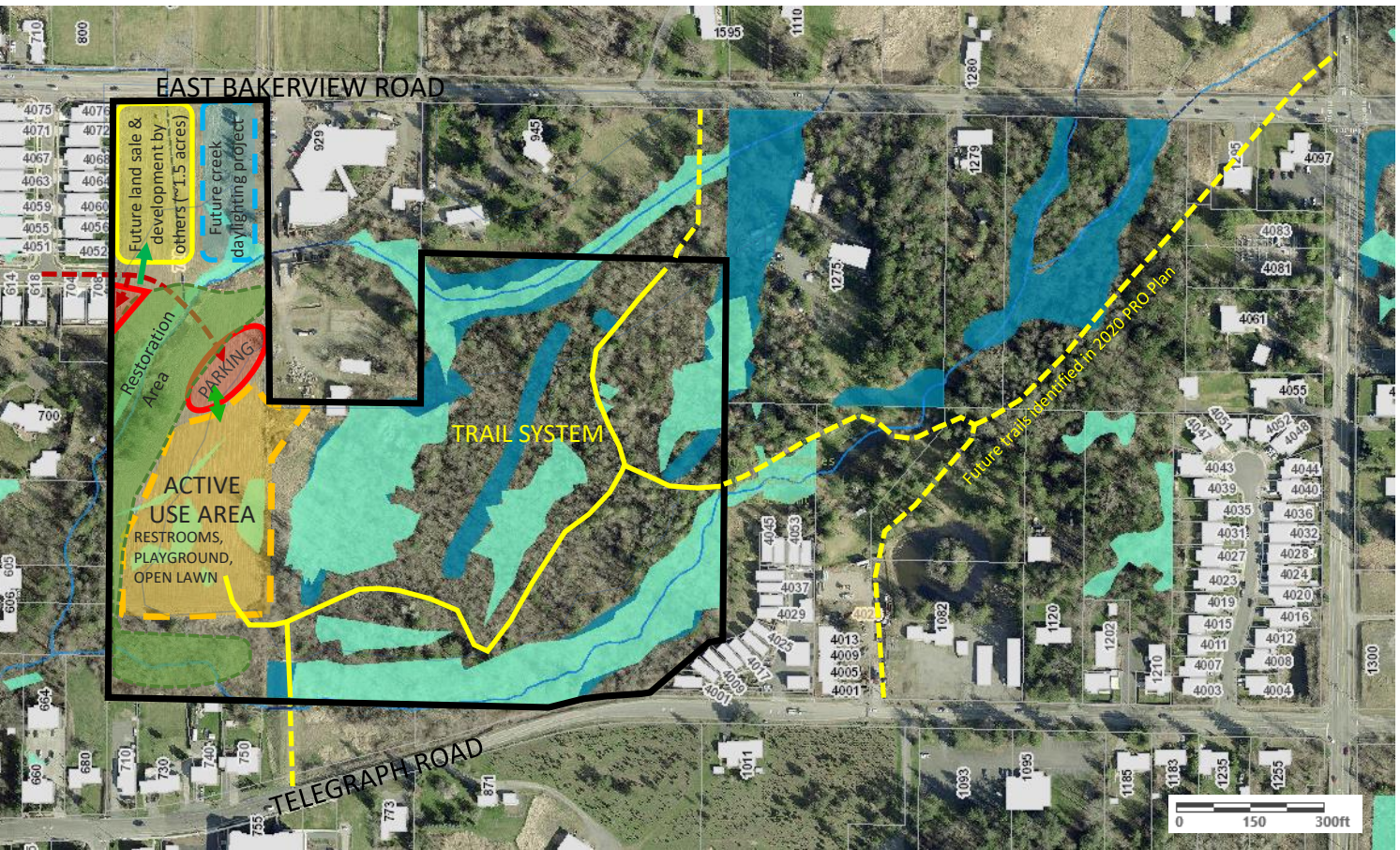
Map 1-Overview Trail Connections North



Map 2- KMN



Map 3- Bakerview Neighborhood Park Conceptual Map



BAKERVIEW NEIGHBORHOOD PARK ACQUISITION  
GRANT: WWRP - Local Parks, 20-1646 ACQ  
Conceptual Site Plan  
6/1/2020

# Van Wyck Park

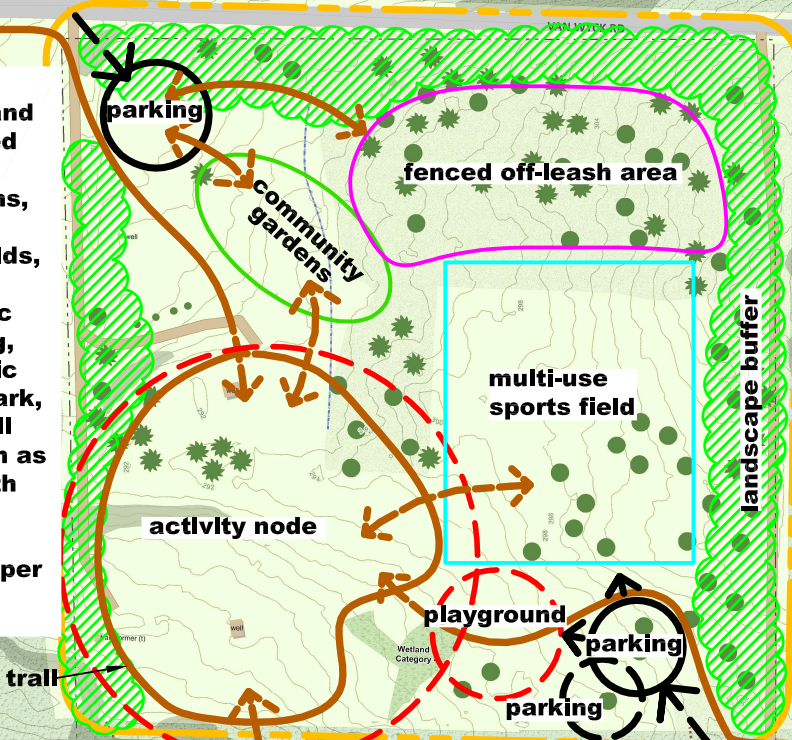
## DRAFT CONCEPT PLAN - 1a

City of Bellingham  
Parks and Recreation Department  
02/09/2012



North half of park should be active and may include fenced off-leash area, community gardens, trails, exercise stations, sport fields, activity node (playground, picnic shelter, court sports, public restroom, spray park, parking, pickle ball court, etc.). Retain as many trees in north half as possible.

Trail connections per adopted trail plan

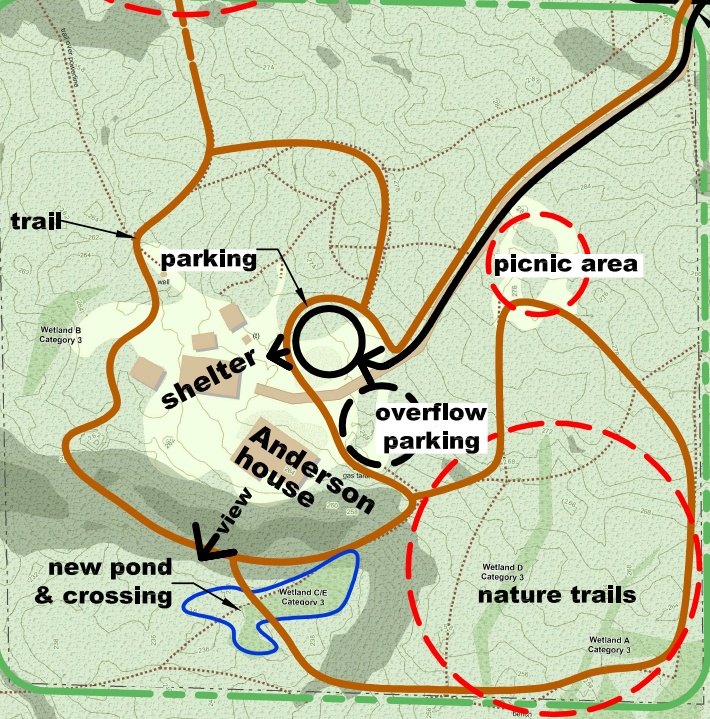


Possible James Street alignment

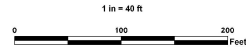
enhance sense of arrival along road

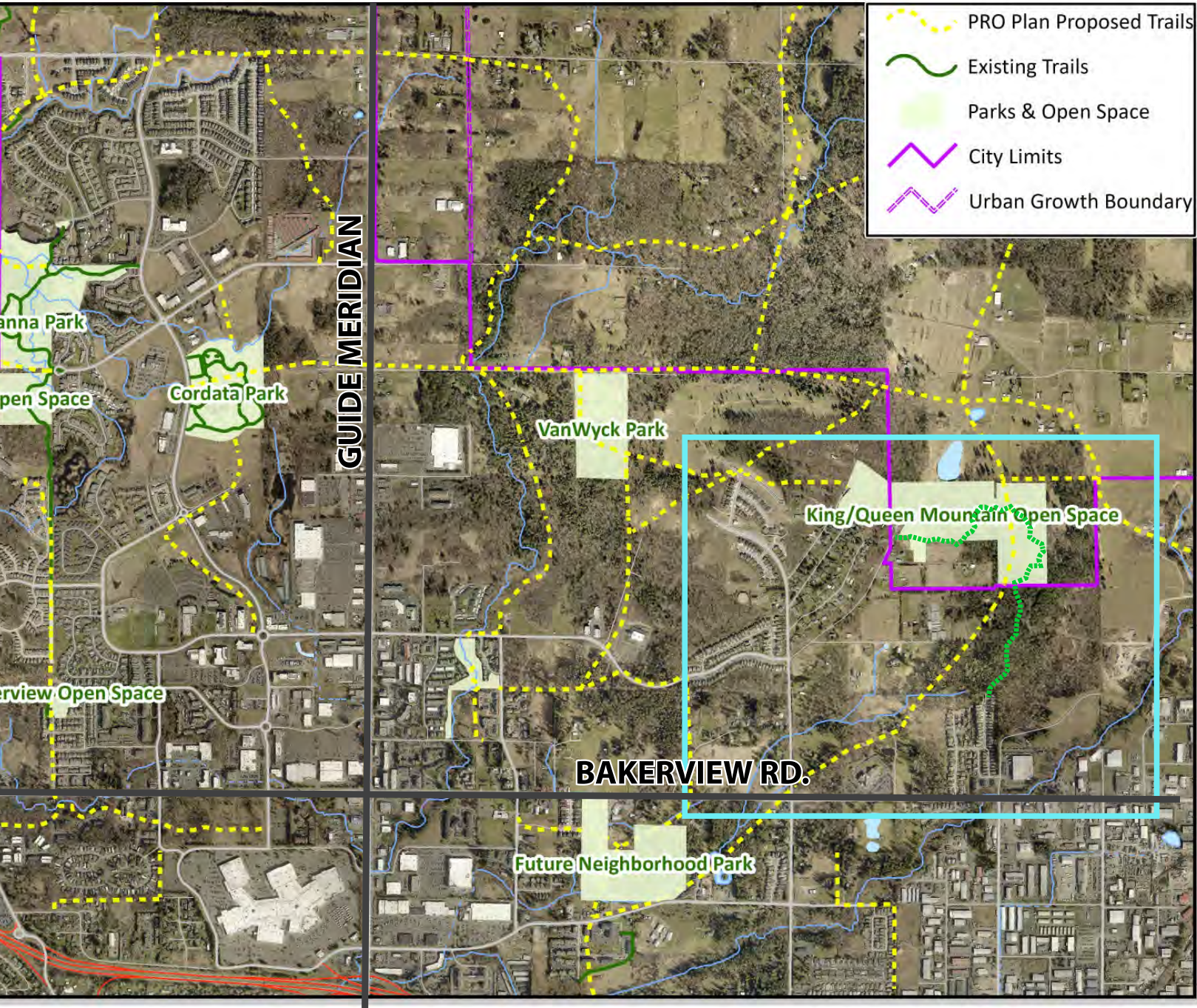
South half of park should be passive and may include trails, wetland enhancement, protection of existing vegetation, programmed use of Anderson House and picnic shelter (garage), and parking.

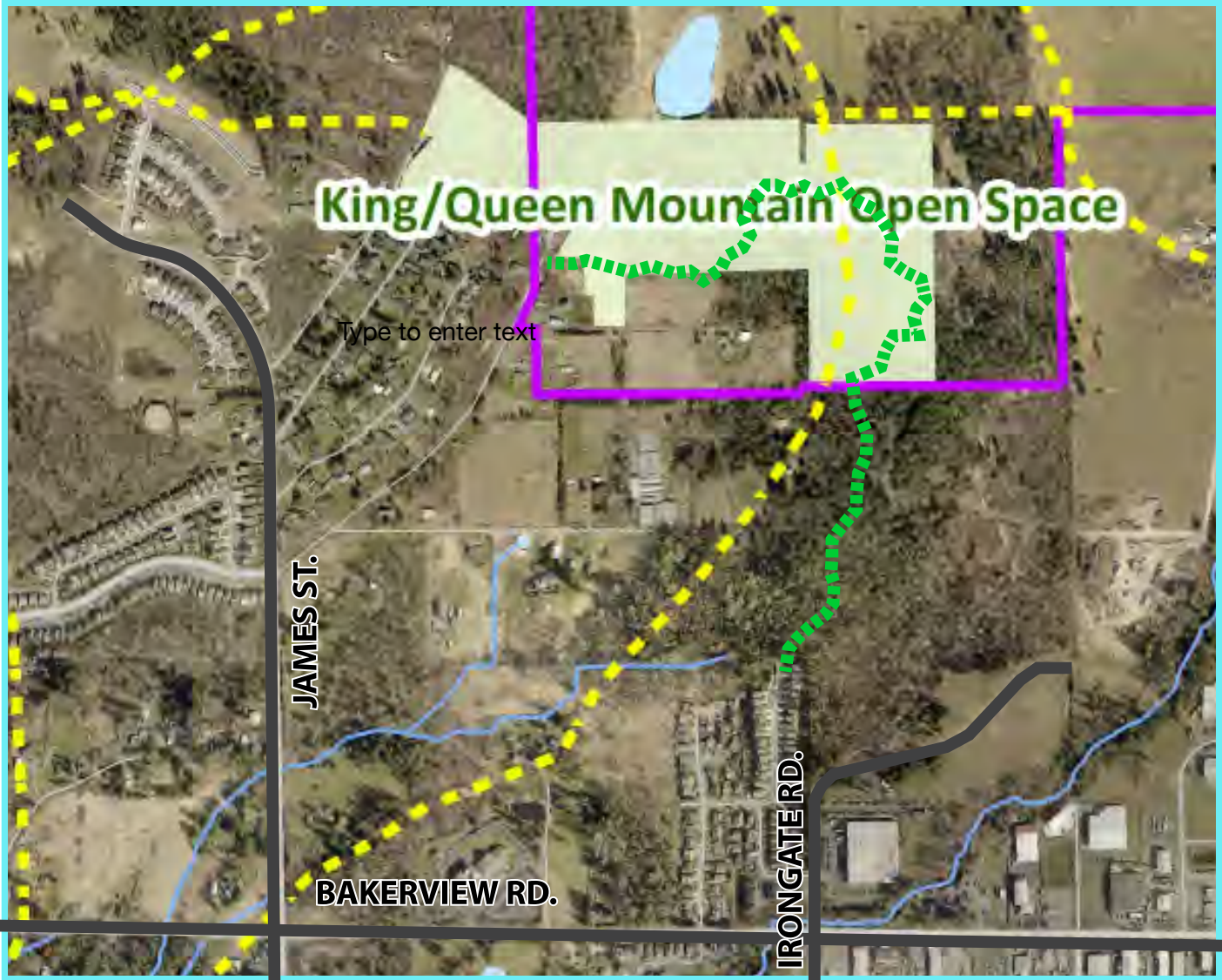
Preserve existing landscape planting around house and native vegetation to greatest extent possible.



- Vegetation**
- Evergreen Tree
  - Deciduous Tree
  - Fruit Tree
  - Open Meadow
  - Underbrush
  - Dense Forest
- 2009 Wetland Delineation**
- 2009 Wetland Delineation
  - Driveway
  - Existing Trails
  - Logging Road
- Slopes**
- <VALUE>
- 0 - 15
  - 15-30
  - 30-40
  - 40 - 100
- Park Buildings**
- Park Buildings







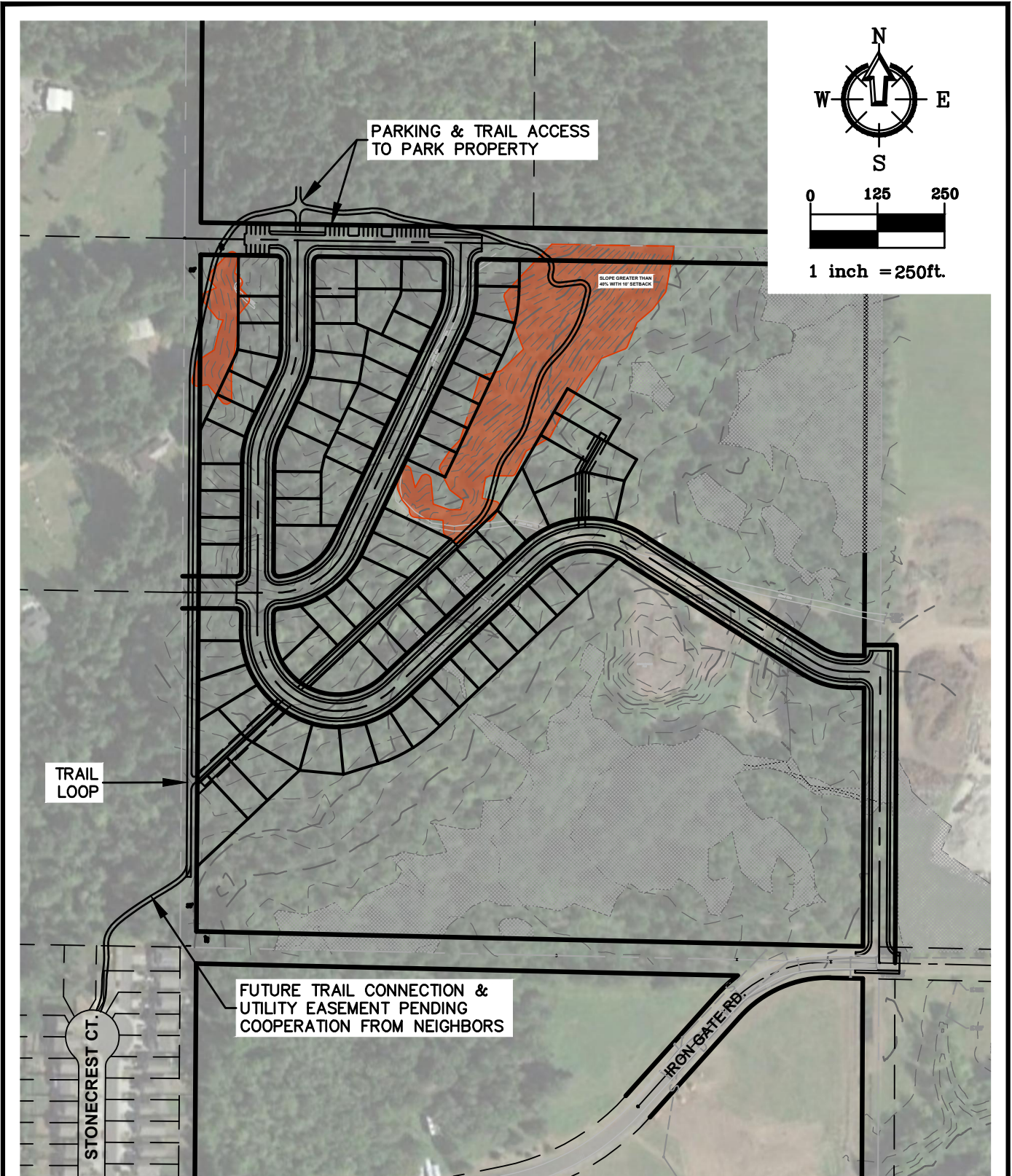
**King/Queen Mountain Open Space**

Type to enter text

**JAMES ST.**

**BAKERVIEW RD.**

**IRONGATE RD.**



DWG No. 18271SP17.DWG

JOB #: 18271

**QUEEN MOUNTAIN  
SITE PLAN**



220 W. Champion Street, Suite 200  
Bellingham, WA 98225

t: 360.650.1408  
f: 360.650.1401

**F R E E L A N D  
& A S S O C I A T E S**

DATE 9-21-2021

SHEET 1

If you have questions or concerns or would like more information there is a community meeting with the developer of the Queen Mtn Homes parcel tomorrow evening at 6:00 pm.

Please visit the KMNA website for the link to register.

[kmna.org](http://kmna.org)